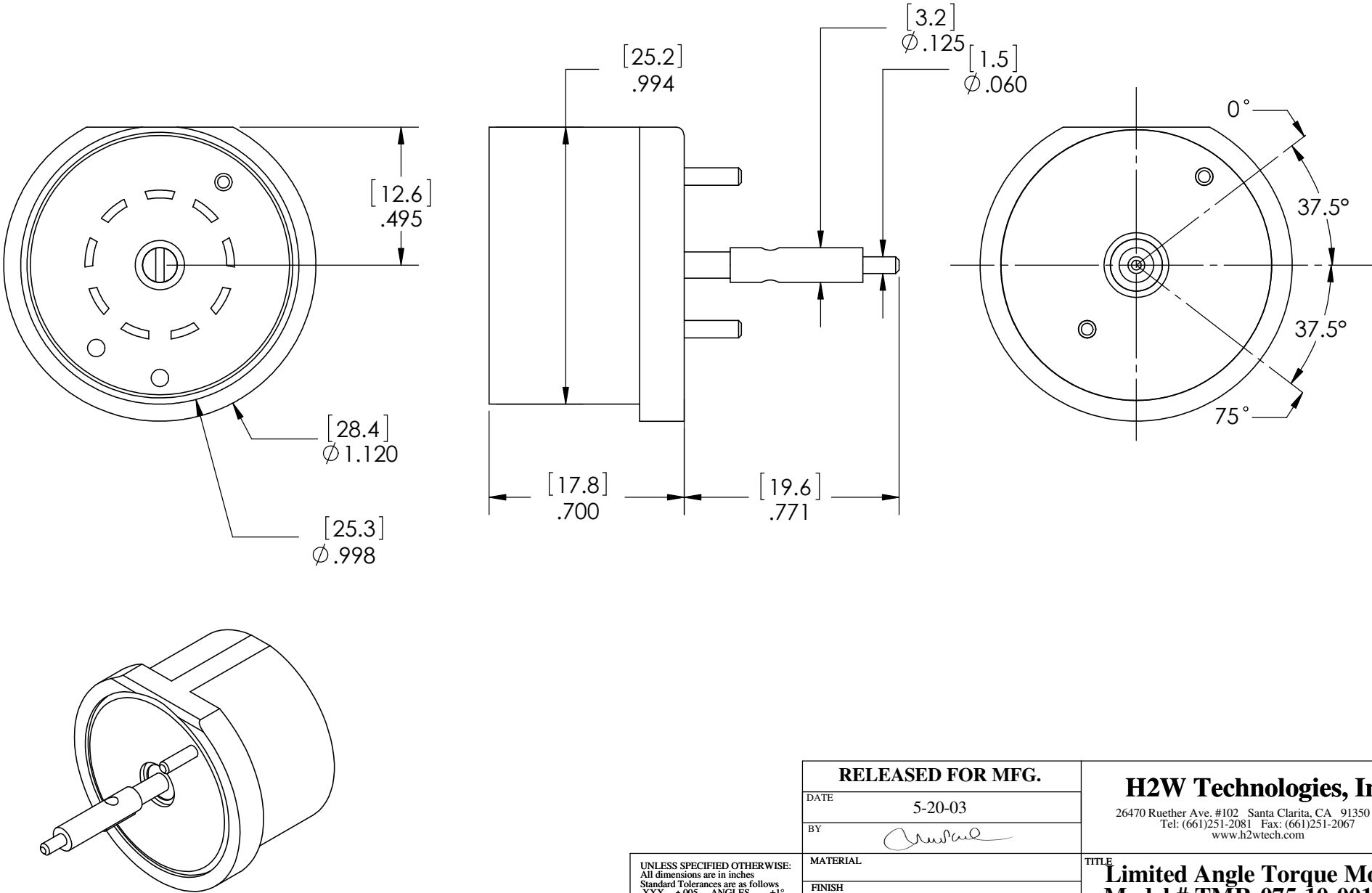



These drawings and specifications are the property of H2W Technologies, Inc. They are issued in confidence and shall not be reproduced, copied, or used without written permission from H2W Technologies, Inc.



UNLESS SPECIFIED OTHERWISE:
All dimensions are in inches
Standard Tolerances are as follows
.XXX ±.005 ANGLES ±1°
.XX ±.010 FILLETS AND
X ±.020 CORNERS .010
Remove All Burrs and Sharp Edges

RELEASED FOR MFG.				<div>H2W Technologies, Inc.</div> <div>26470 Ruether Ave. #102 Santa Clarita, CA 91350 USA</div> <div>Tel: (661)251-2081 Fax: (661)251-2067</div> <div>www.h2wtech.com</div>		
DATE 5-20-03						
BY 						
MATERIAL				<div>TITLE</div> <div>Limited Angle Torque Motor</div> <div>Model # TMR-075-10-001-2H</div>		
FINISH						
DRAWN OOG	DATE 6-20-03	APPROVED MPW	DATE 6-20-03	DWG # 80-0070	REV A	Sheet 1 of 2

LIMITED ANGLE TORQUE MOTOR SPECIFICATIONS		
Motor P/N	TMR-075-10-001-2H	
Continuous Torque Range	75 degrees	1.31 Radians
Radial Clearance	0.020" per side	0.51 mm per side
Bearing Type	Shielded Rotary Bearing	
Moving Mass	0.32 oz*	9 grams*
Total Mass	1.13 oz*	32 grams*
Resistance @ 20C (Single Coil Pair)	21.5 ohms +/- 10%	
Inductance @ 20C (Single Coil Pair)	2.3 mH*	
Electrical Time Constant (Single Coil Pair)	0.11 msec *	
Motor Constant (Single Coil Pair)	0.43 in-oz/SQRT(Watt)*	0.003 N-m/SQRT(Watt)*
Torque Constant (Single Coil Pair)	2 in-oz/Amp*	0.014 N-m/Amp*
Back EMF (Single Coil Pair)	0.014 Volts/rad/sec*	
Continuous Torque (Single Coil Pair)	1.0 in-oz*	0.007 N-m*
Max Power @ 100% Duty	5.4 Watts	
Peak Torque (Single Coil Pair)	3.0 in-oz*	0.021 N-m*
Max Power @ 10% Duty	49 Watts	
Rotor Inertia	8.14 E-3 oz-sq.in.	1.49 E-7 kg-sq.m

* Values based on calculations and are for reference only, actual values will be confirmed upon shipment. As a rule of thumb the values contained are +/- 10% unless otherwise stated within the table.

TITLE Limited Angle Torque Motor Model # TMR-075-10-001-2H		
DWG #	80-0070	REV A
SHEET		2 of 2